



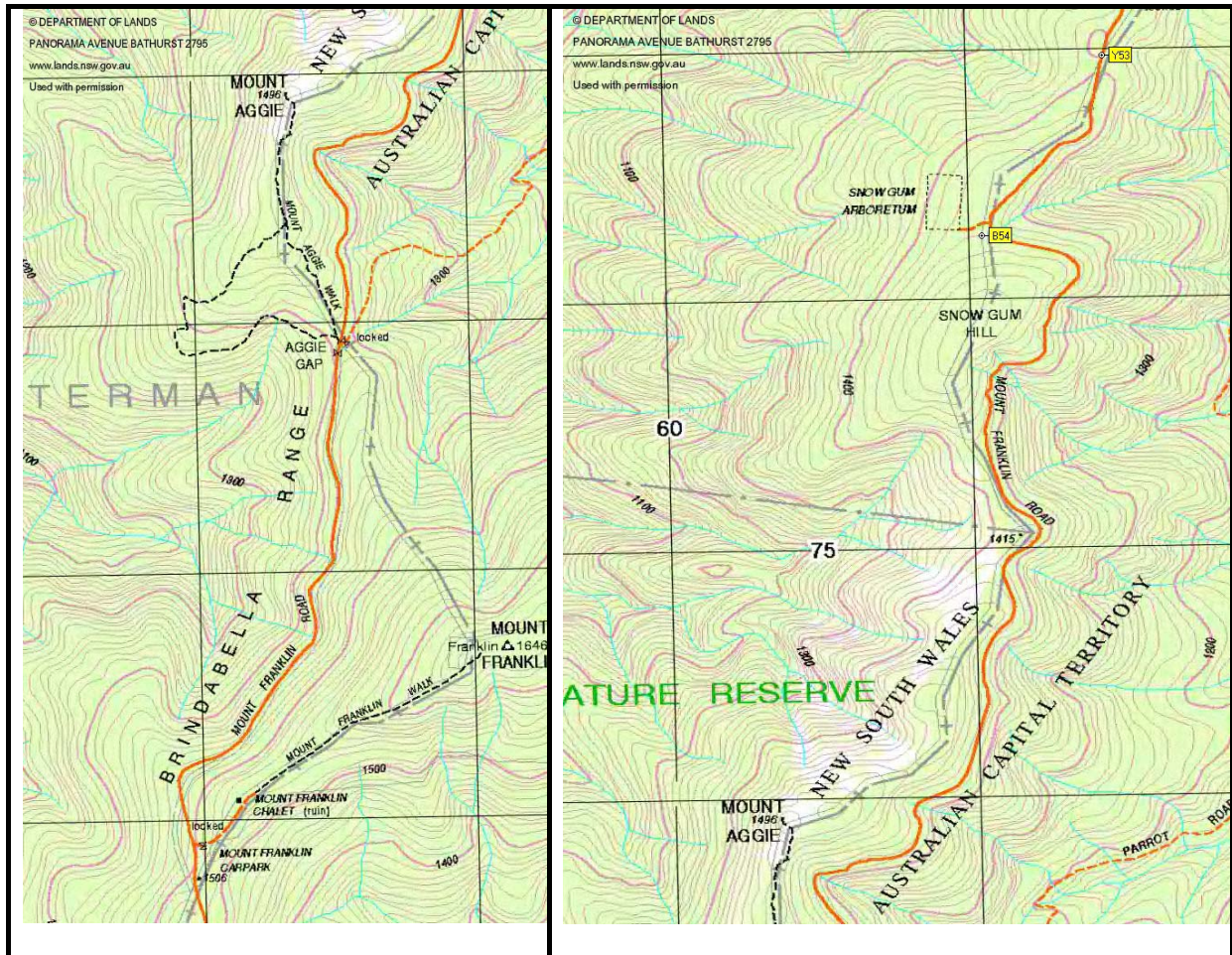
100
CANBERRA

SHOW US YOUR LIMITS



Mt Franklin Talk and Walk Sunday 2 May 2010

'Walk' 2 – drive out



- A. At 6.7km from Mt Franklin, pull off the road to the left (west) at the track to Snow Gum arboretum (burnt in 2003). Walk a few metres to border marker B54.
- B. At 7.5km from Mt Franklin, you'll pass border marker Y53 on the left (west) graded edge of the road.



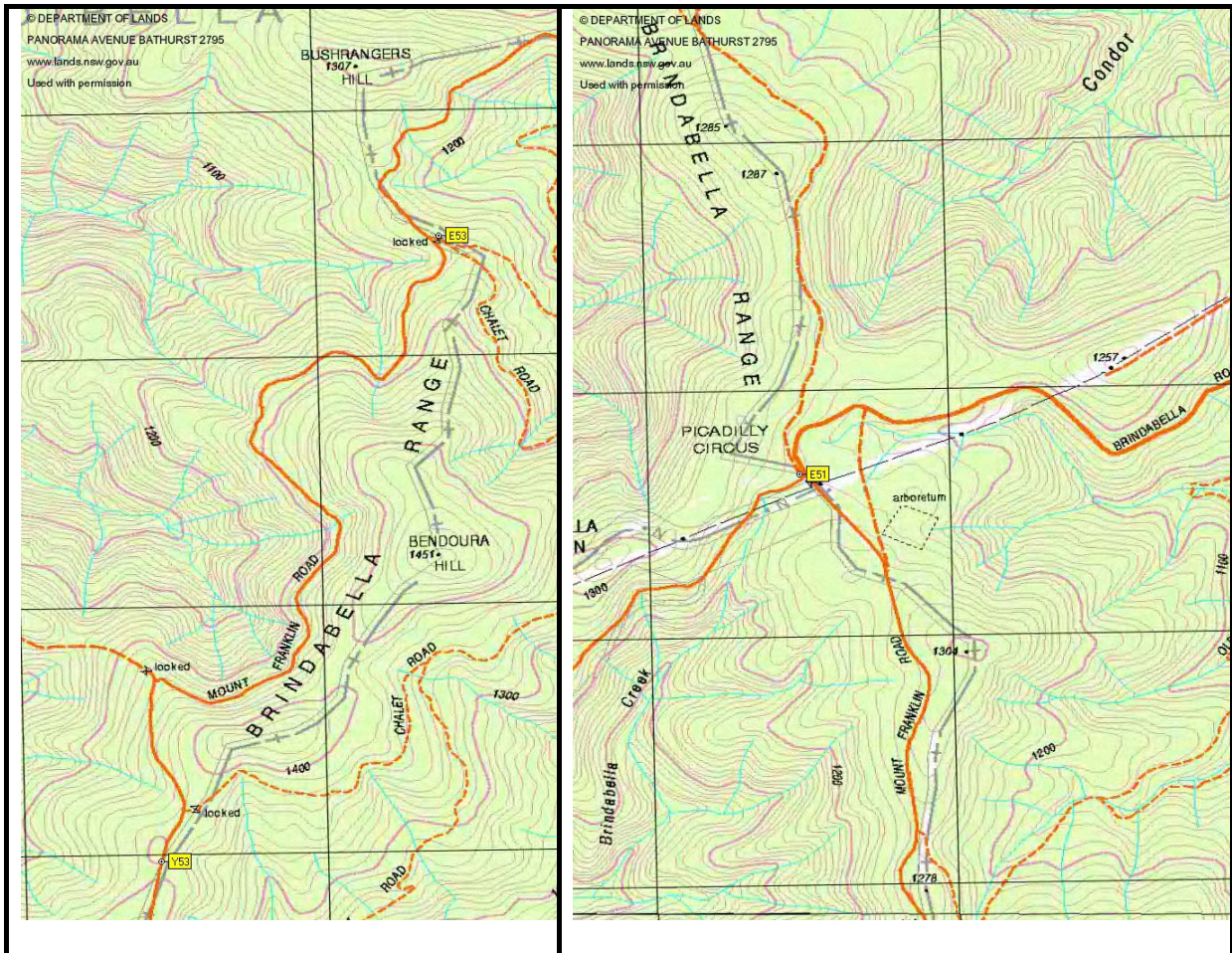
100
CANBERRA

SHOW US YOUR LIMITS



Mt Franklin Talk and Walk Sunday 2 May 2010

'Walk' 2 – drive out



NB. The bottom of the right hand map segment is not contiguous with the top of the left hand map segment

C. At 11.3km from Mt Franklin, turn right (east) into Chalet Rd/Bendora Arboretum car park. Walk a couple of metres to border marker E53. Return at another time to walk the 3.5km return and 80m climb to Bendora Arboretum - it is the only extant ACT high country arboretum and is magnificent.

D. At 19.5km from Mt Franklin, visit border marker E51 at Piccadilly Circus. Maybe park on the open verge of the road on the right (east) as you approach Piccadilly Circus.